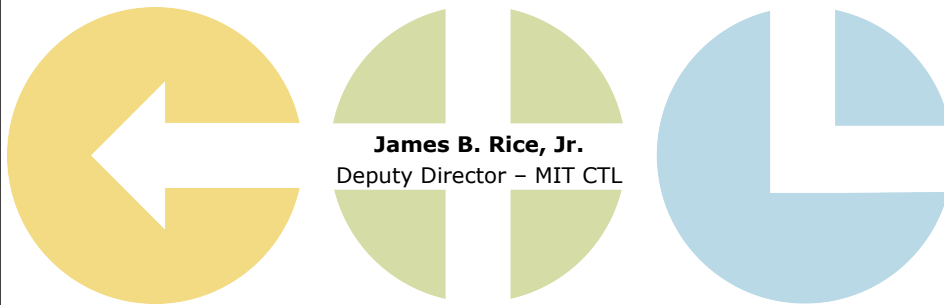




MIT Center for Transportation & Logistics

Supply Chain Management: Driving Strategic Advantage

MIT CTL Executive Education Course
June 7, 2016



Overview

- Center for Transportation and Logistics (CTL)
 - School of Engineering – ESD
 - CTL Supply Chain Exchange: shippers, carriers, retailers and 3PLs

What is MIT CTL?

“Create supply chain innovation and drive it into practice.”

- \$15M Research Budget
- 15 Full-Time Researchers
- 20+ Active Research Projects
- 60+ Faculty & Researchers Across MIT

- 3-Tier Partnership Model
- 50 Member Companies
- Industry-Driven Workshops & Symposia

- Supply Chain Management Program
- Massive Online Open Courses
- Executive Education
- PhD in Logistics

3

MIT GLOBAL SCALE NETWORK

Supply Chain And Logistics Excellence

- 6** Centers of Excellence
- 10+** Educational Programs
- 80+** Researchers & Faculty
- 150+** Corporate Partnerships
- 117+** Current Students
- 1000+** Alumni Worldwide

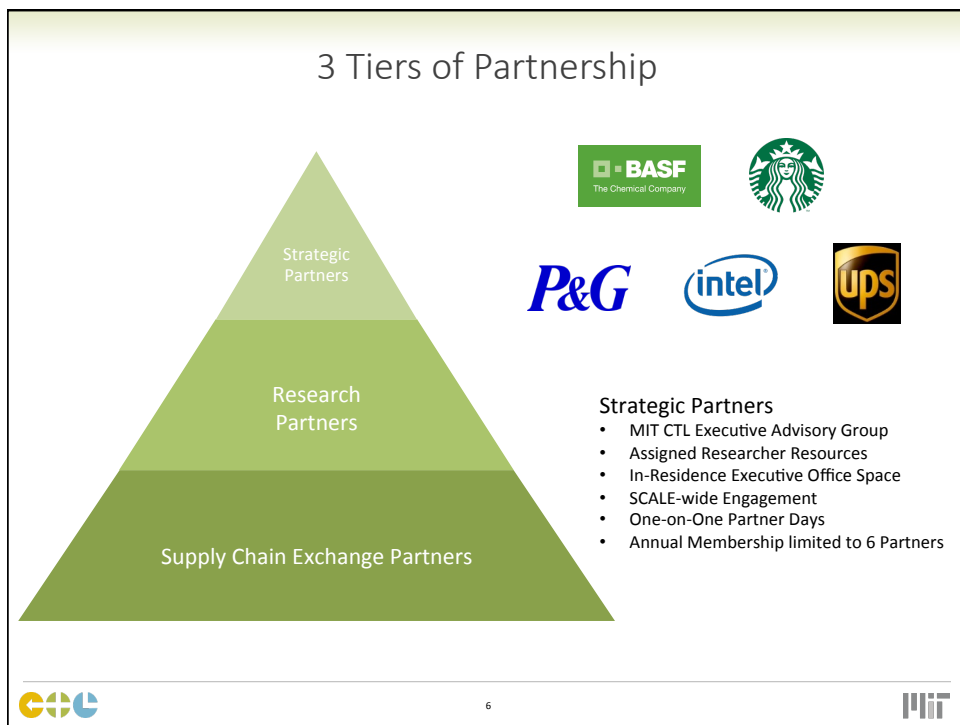
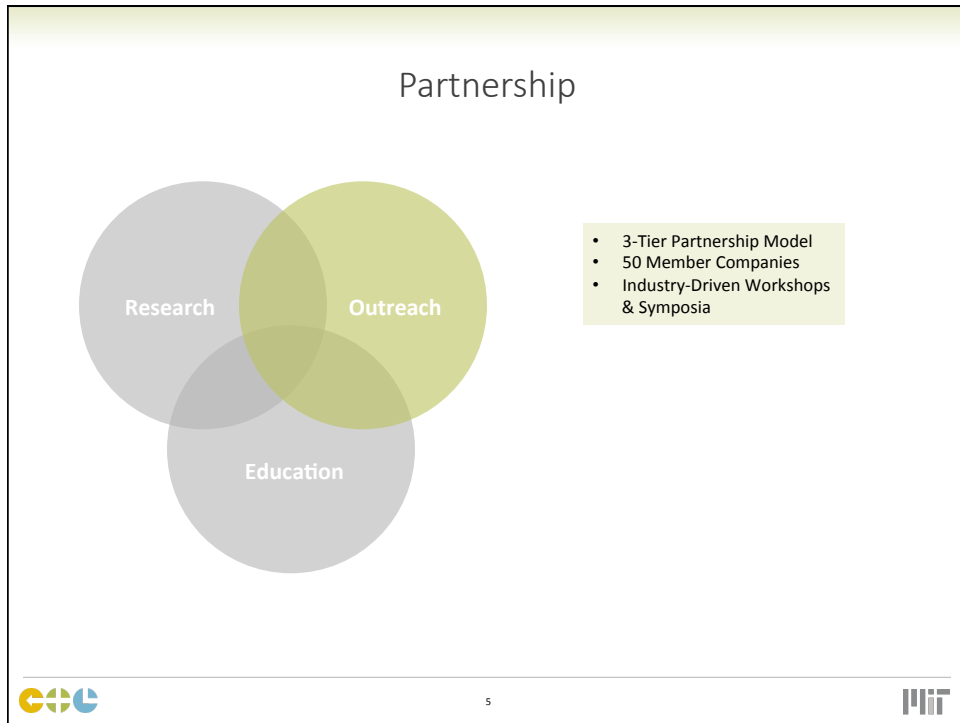
1 Global Network

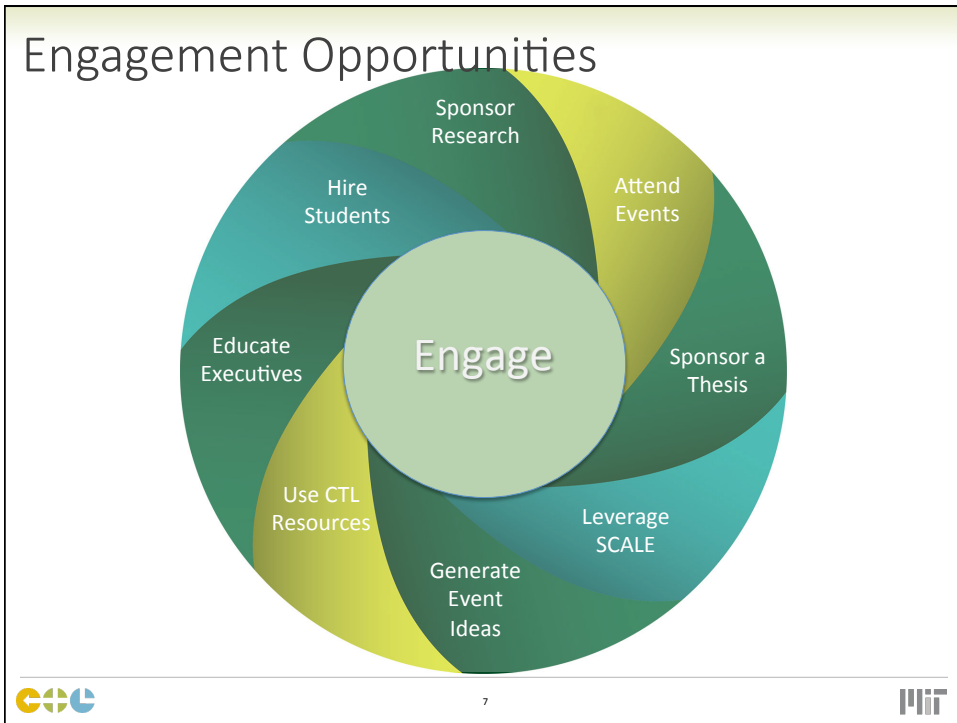
NEW in 2016:
Ningbo Supply Chain Innovation Institute
China

NEW in 2015:
Luxembourg Centre for Logistics

MALAYSIA INSTITUTE FOR SUPPLY CHAIN INNOVATION

4





Overview

- Center for Transportation and Logistics (CTL)
 - Part of School of Engineering
 - CTL Supply Chain Exchange: shippers, carriers and 3PLs
- Structure
 - Two parts: Current Dynamics and Strategic Future
 - Daily mix of cases, interactive exercises, some lectures, optional research briefs
- Course binder:
 - Online HBSP, course url <http://ctl.mit.edu/june2016>
 - Bios, copies of materials, some adds during the course
- Logistics
 - Turn off phones
 - Safety review
 - Introduce CTL Staff

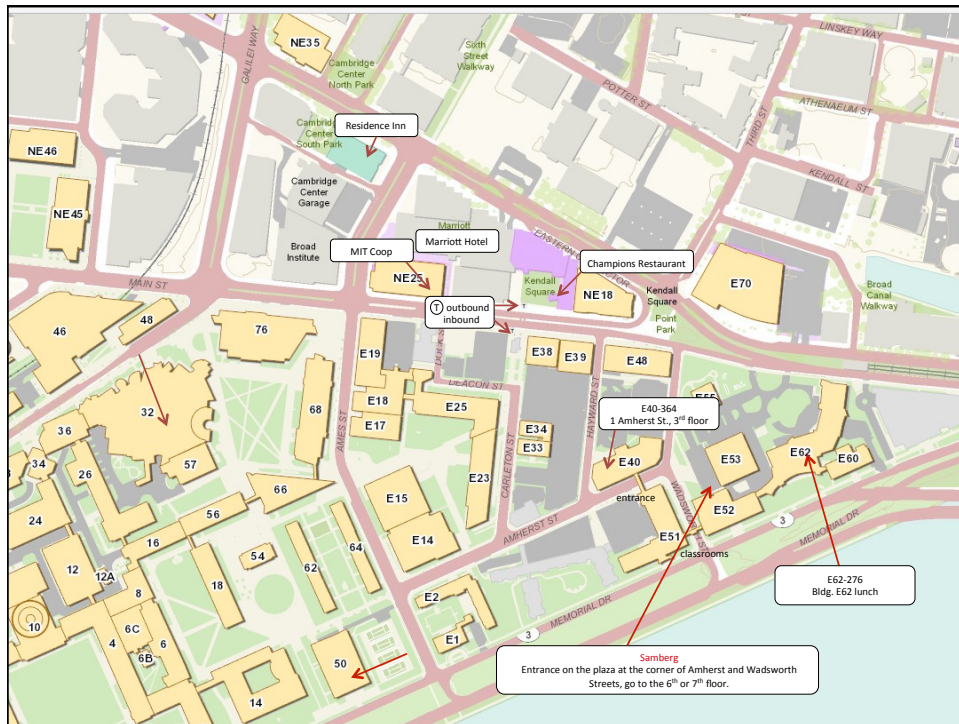
SC Management: Driving Strategic Advantage

- Tuesday:
 - E62 & Samberg
 - Introduction & Ice Breaker
 - Halloran Metals Case: Jim Rice
 - Beer Game: Dr. Chris Caplice
 - Beer Game Debrief: Jim Rice
 - **Adjourn 5:00 pm**
 - Reception at Champions (Marriott) – **hard stop at 7 pm.**
- Wednesday:
 - E62-276
 - Intro to SC Financial Accounting and Analysis: Jim Rice
 - Activity Based Cost Accounting; Dakota Office Products Case: Jim Rice
 - Working Capital & Cash-to-Cash Conversion Cycle: Dr. Jarrod Goentzel
 - Working Capital Simulation: Jarrod Goentzel
 - Evaluating Supply Chain Initiatives: Jarrod Goentzel
 - Last Mile Logistics: Dr. Matthias Winkenbach
 - **Adjourn 5:15 pm**
 - OPTIONAL RESEARCH BRIEFS
 - Sustainable Sourcing – Dr. Alexis Bateman
 - S&OP Overview – Kai Trepte
 - **Adjourn 6:15 pm**

SC Management: Driving Strategic Advantage

- Thursday
E62-276
 - SCM Introduction & info on recruiting – Sue Wang
 - Supply Chain Risk Management: Resilience – Jim Rice
 - Supply Chain Resilience SCREAM Exercise – Dr. Josué Velázquez
 - Class Photo
 - SCREAM Debrief – Josué Velázquez
 - Zara Fast Fashion Case: Jim Rice
 - Global Supply Chain Business Case Simulation: Jarrod Goentzel
 - **Adjourn 5:15 pm**
 - OPTIONAL RESEARCH BRIEFS
 - Omni-channel & Supply Chain – Dr. Eva Ponce
 - Sustainable Supply Chains - Josué Velázquez
 - **Adjourn 6:15 pm**

- Friday
SAMBERG
 - Global SC Simulation Debrief: Jarrod Goentzel
 - The Power of Resilience: Prof. Yossi Sheffi
 - SC2020: Rethinking Your SC Strategy: Dr. Roberto Perez-Franco
 - **Adjourn 2:15 pm**



Getting the most out of the course.....

- Read the cases in advance of class.
- Bring laptops and power supplies Wed & Thurs
- Build your network, get to know all the other participants and the instructors.
- Share experiences with othersbut
 - This session includes discussions among various stakeholders in global supply chains (e.g. shippers, carriers, forwarders, 3PLs). Our focus is on education, and we explore and understand how each of us can improve our overall global supply chains. Participants should not sell their services or discuss pricing, costing, rate, tariff or other confidential information here.